

兔抗 SSB 多克隆抗体

中文名称：兔抗 SSB 多克隆抗体

英文名称：Anti-SSB rabbit polyclonal antibody

别名：La; LARP3; La/SSB

相关类别：一抗

储存：冷冻（-20℃）

宿主：Rabbit

抗原：SSB

反应种属：Human

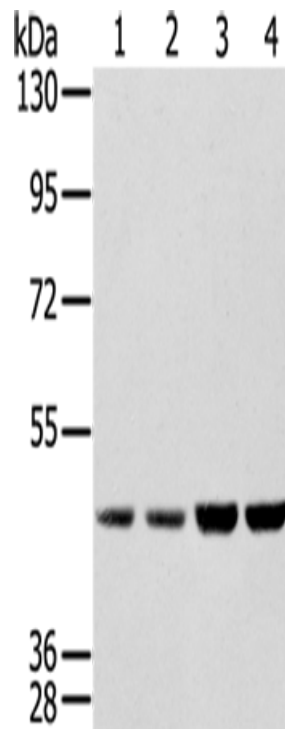
标记物：Unconjugate

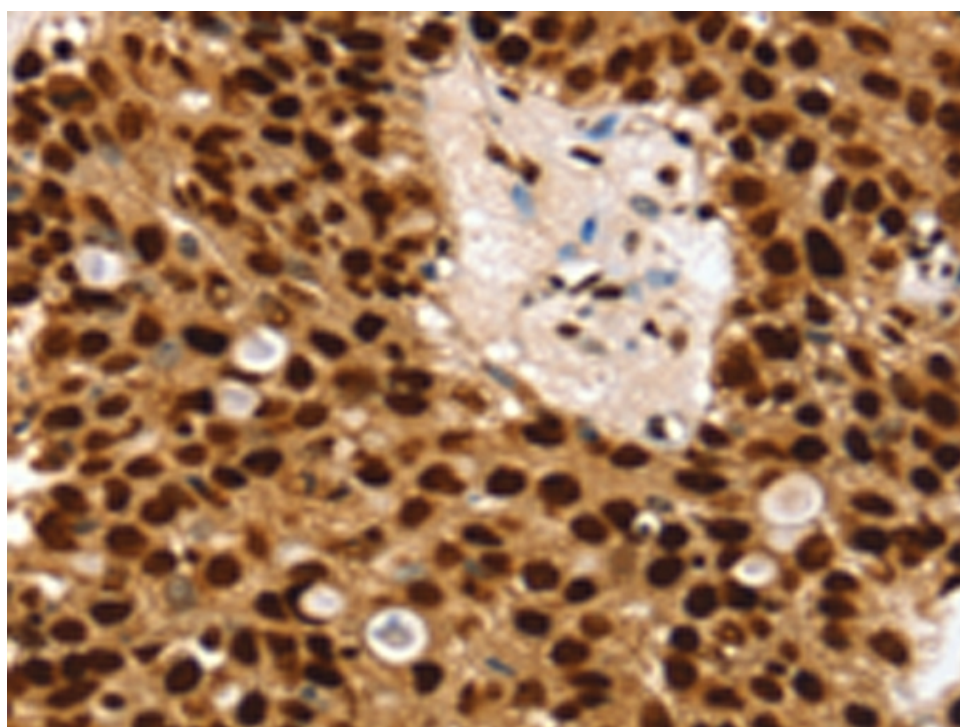
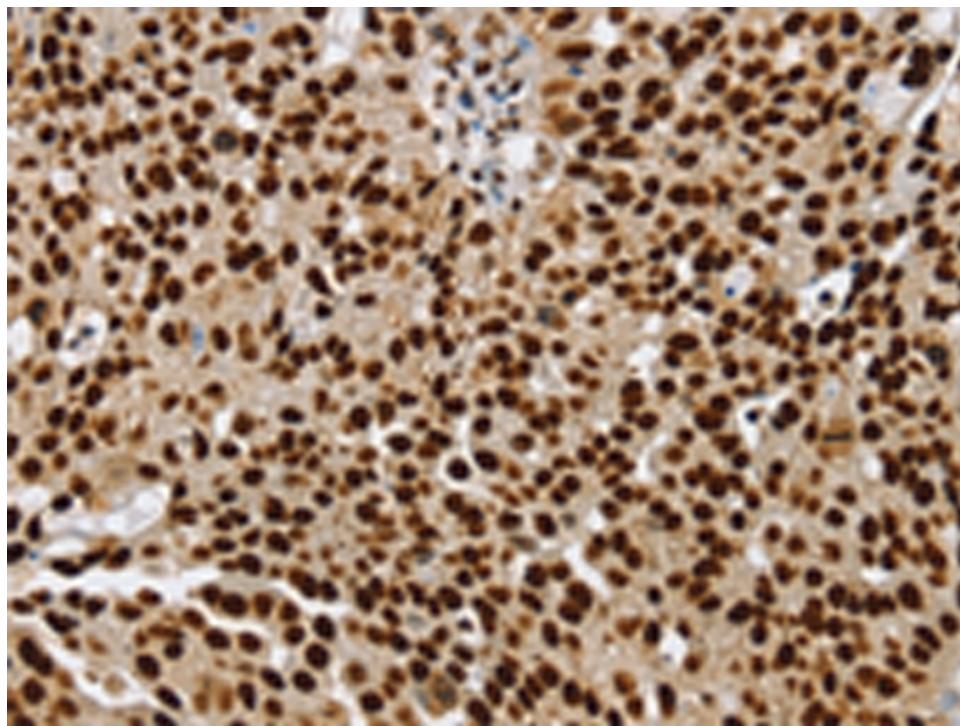
克隆类型：rabbit polyclonal

技术规格

Background:	The protein encoded by this gene is involved in diverse aspects of RNA metabolism, including binding and protecting poly(U) termini of nascent RNA polymerase III transcripts from exonuclease digestion, processing 5' and 3' ends of pre-tRNA precursors, acting as an RNA chaperone, and binding viral RNAs associated with hepatitis C virus. Autoantibodies reacting with this protein are found in the sera of patients with Sjogren syndrome and systemic lupus erythematosus.
Applications:	ELISA, WB, IHC
Name of antibody:	SSB

Immunogen:	Synthetic peptide of human SSB
Full name:	Sjogren syndrome antigen B (autoantigen La)
Synonyms :	La; LARP3; La/SSB
SwissProt:	P05455
ELISA Recommended dilution:	2000-5000
IHC positive control:	Human breast cancer and Human ovarian cancer
IHC Recommend dilution:	25-100
WB Predicted band size:	47 kDa
WB Positive control:	K562, 231, Raji and hela cells
WB Recommended dilution:	500-2000





mlbio 梅联生物
Good elisakit producers