

## 兔抗 SNCA(Ab-125) 多克隆抗体

中文名称：兔抗 SNCA(Ab-125) 多克隆抗体

英文名称： Anti-SNCA(Ab-125) rabbit polyclonal antibody

别名： PD1; NACP; PARK1; PARK4

相关类别： 一抗

储存： 冷冻（-20℃） 避光

宿主： Rabbit

抗原： SNCA(Ab-125)

反应种属： Human Mouse Rat

标记物： Unconjugate

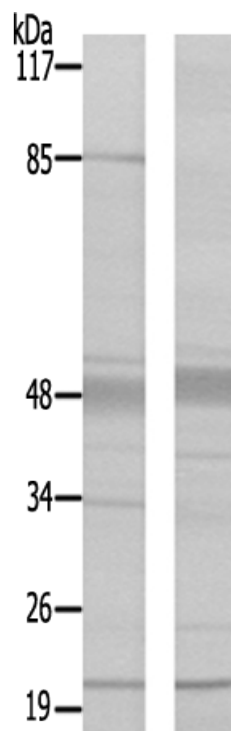
克隆类型： Unconjugate

### 技术规格

#### Background:

Alpha-synuclein is a member of the synuclein family, which also includes beta- and gamma-synuclein. Synucleins are abundantly expressed in the brain and alpha- and beta-synuclein inhibit phospholipase D2 selectively. SNCA may serve to integrate presynaptic signaling and membrane trafficking. Defects in SNCA have been implicated in the pathogenesis of Parkinson disease. SNCA peptides are a major component of amyloid plaques in the brains of patients with Alzheimer's disease.

<b>Applications:</b>	WB
<b>Name of antibody:</b>	SNCA(Ab-125)
<b>Immunogen:</b>	Synthesized non-phosphopeptide derived from human Synuclein- $\alpha$ around the phosphorylation site of tyrosine 125 (E-A-Y(p)-E-M).
<b>Full name:</b>	synuclein, alpha (non A4 component of amyloid precursor)
<b>Synonyms :</b>	PD1; NACP; PARK1; PARK4
<b>SwissProt:</b>	P37840
<b>WB Predicted band size:</b>	14 kDa
<b>WB Positive control:</b>	Rat brain and mouse brain tissue lysates
<b>WB Recommended dilution:</b>	500-3000



**mlbio** 梅联生物  
Good elisakit producers